

# select™

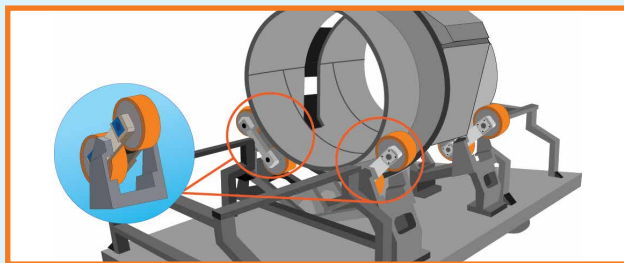
## HOLD BAGGAGE & AIR CARGO SECURITY SYSTEM



### Product Overview

**SeleCT** is an advanced aviation security EDS engineered to deliver superior threat detection and low total cost of ownership. It features a large tunnel Computed Tomography (CT) design that supports selectable speeds up to 1800 BPH and selectable threat detection algorithms.

**SeleCT** redefines CT by offering superior image quality and eliminating the risk of catastrophic bearing failures. Building on the ConneCT, the SeleCT offers best-in-class operational availability, low power consumption, open architecture capabilities, and third-party algorithms.



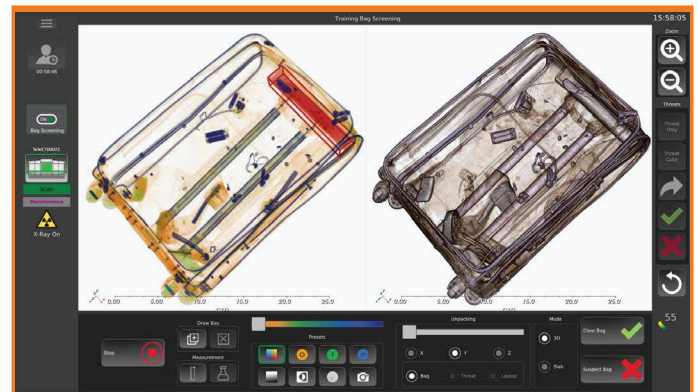
CT Redefined: Reliable Bearingless Wheel Design

Designed to be



### Highlights

- Next generation 3D image quality for greater levels of detection, lower false alarms, and faster on-screen resolution.
- SeleCT-able algorithms enable risk-based screening for enhanced security.
- SeleCT-able belt speeds enable intelligent load balancing and reduced energy consumption.
- Futureproof platform with in-situ upgrades to provide enhanced capabilities for a 20-year lifecycle.
- Shares platform-based design with the ConneCT, providing common user interfaces, network, training, service, software, APIs, and parts.





# Specifications

## Physical Specifications

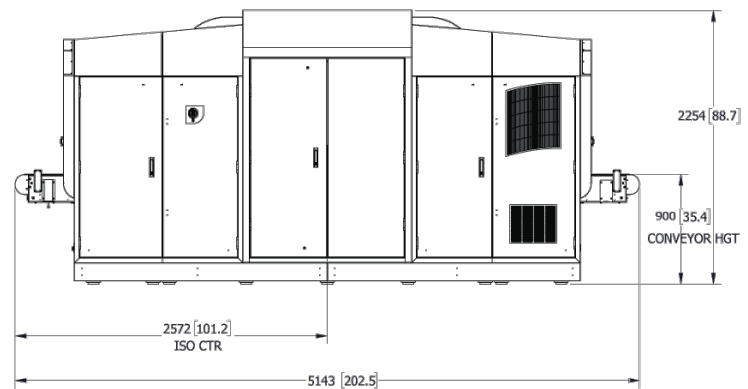
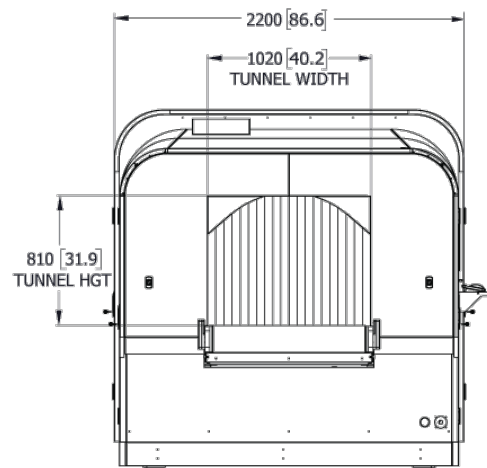
<b>DIMENSIONS</b>	L	5,143 mm (202.5 in)
	W	2,200 mm (86.6 in)
	H	2,260 mm (89.0 in)
<b>TUNNEL SIZE</b>	W	1020 mm (40.2 in)
	H	810 mm (31.9 in)
<b>WEIGHT</b>		<6,000 kg (13,228 lbs)

## Environment & Power

<b>OPERATING TEMP</b>	0 to 40 C (32-104 F)
<b>OPERATING HUMIDITY</b>	10 to 90%, non-condensing
<b>STORAGE TEMP</b>	-20 to 50 C (0-120 F)
<b>POWER CONSUMPTION</b>	<10 kVA typical
<b>LOWER POWER MODE</b>	<4 kVA
<b>INPUT VOLTAGE</b>	400/480 VAC
<b>X-RAY POWER</b>	180 kV, 15mA
<b>OPERATING NOISE LEVEL</b>	<78dB
<b>COMPUTER OS</b>	Linux

## Performance

<b>CONVEYOR SPEED</b>	0.5 m/s and/or 0.3 m/s
<b>MAX CONVEYOR LOAD</b>	200 kg (441 lbs)
<b>OPERATIONAL THROUGHPUT</b>	1,800 BPH (high speed)
	1,000 BPH (performance mode)



The information contained in this datasheet is subject to change without notice. This datasheet is intended for marketing purposes only and in no event shall it be used or included in a resulting contract between Analogic and customer. Actual products delivered may not include all the features and capabilities shown. Analogic disclaims any and all warranties if the information in this data sheet is inaccurate. Final determination of the suitability of Analogic's products for any application or the manner of its use is the customer's sole responsibility.